

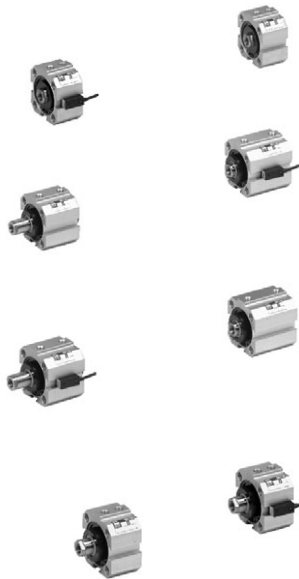
OTHER CYLINDERS On Demand



Short stroke compact cylinders
(series 1500, section 4)

PNEUMAX

Basic version



Ordering code

15 .Ø.stroke.

— standard seals
— V = FPM seals
— T = HNBR seals

- 01 = Double acting version
- 11 = Double acting version with magnetic piston
- 02 = Single acting version front spring
- 12 = Single acting version front spring with magnetic piston
- 03 = Single acting version rear spring
- 13 = Single acting version rear spring with magnetic piston
- 04 = Double acting push pull version
- 14 = Double acting push pull version with magnetic piston

Standard strokes:

Type 1501, 1504, 1511, 1514, 1515, 1516, 1517 and 1518:
for all bores from 5 to 50 mm every 5 mm.

Type 1502, 1503, 1512 and 1513:
for all bores from 5 to 10 mm.

Type with non-rotating device:

Ø20 and Ø25 from 5 to 40 mm every 5 mm
Ø32 and Ø40 from 5 to 50 mm every 5 mm
Ø50 and Ø63 from 5 to 60 mm every 5 mm
Ø80 and Ø100 from 5 to 80 mm every 5 mm





Non rotating cylinders

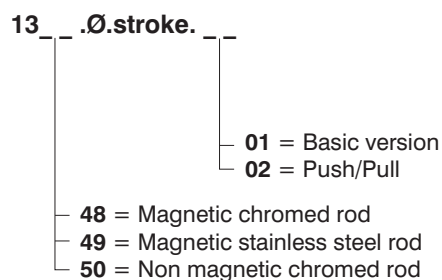
(series 1348 - 1350, section 4)

PNEUMAX

Non rotating version



Ordering code



Bore: Ø32 - Ø40 - Ø50 - Ø63

Standard strokes

- Ø 32: 25-50-75-80-100-125-150 mm
- Ø 40: 25-50-75-80-100-125-150-160 mm
- Ø 50: 25-50-75-80-100-125-150-160-200-250 mm
- Ø 63: 25-50-75-80-100-125-150-160-200-300-320 mm

PNEUMAX

Twin rods cylinders

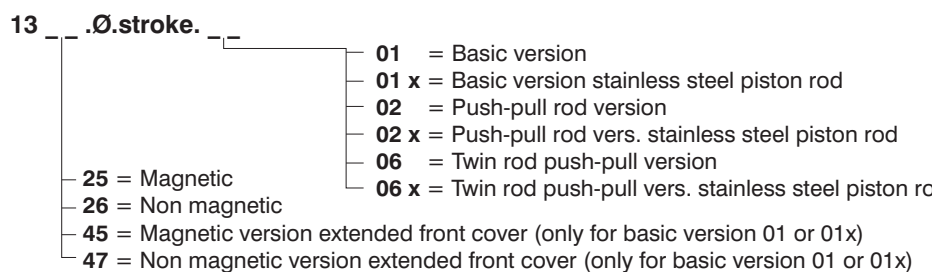
(series 1325-1326-1345-1347, section 4)



Basic version



Ordering code



Bore: Ø32 - Ø40 - Ø50 - Ø63 - Ø80 - Ø100

Standard strokes

- Ø 32: 25-50-75-100-150-200 mm
- Ø 40: 25-50-75-100-150-200-250 mm
- Ø 50: 25-50-75-100-150-200-250-300 mm
- Ø63: 25-50-75-100-125-150-160-200-300-320 mm
- Ø80: 25-50-75-100-150-200-250-300-350-400-500
- Ø100: 25-50-75-100-150-200-250-300-350-400-500



Technical modifications keep in reserve !

(2021/03)



Rotary actuators

(series 1330 - 1333, section 4)

PNEUMAX**Ordering code**

- 13 . Ø . ***
- 01** = Without rotating adjustment angle
 - 01R** = With rotating adjustment angle
 - 30** = Female magnetic pinion version
 - 31** = Female non magnetic pinion version
 - 32** = Male magnetic pinion version
 - 33** = Male non magnetic pinion version

* = Rotating angle: 90 - 180 - 270 - 360

Bore	32	40	50	63	80	100
Torque Nm/bar	0,9	1,7	2,9	5,55	13,2	23,8
Axis load max. kg.	8	10	10	12	18	22
Cushioning angle	60°	60°	50°	50°	40°	40°

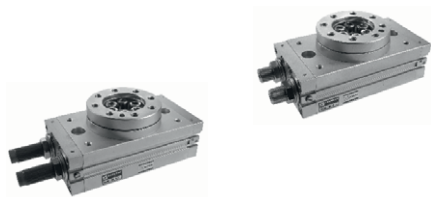


Rotary actuators

(series 6400, section 5)

PNEUMAX

Double rack Rotary actuators with turn table

**Ordering code**

- 6400.**
- 10** (piston Ø15)
 - 30** (piston Ø20)
 - 50** (piston Ø25)
 - 100** (piston Ø32)
 - 200** (piston Ø40)
- A** = Standard
 - R** = Cushioning (hydraulic damper)

Single rack Rotary actuators



- 6411.Ø.**
- 50**
 - 63**
 - 80**
 - 100**
- 90** = rotation 90°
 - 180** = rotation 180°

Ordering code

Vane type rotary actuators



- 6420.Ø.**
- Ø10**
 - Ø15**
 - Ø20**
 - Ø30**
 - Ø40**
 - Ø50**
 - Ø63**
 - Ø80**
 - Ø100**
- 90** = 90°
 - 180** = 180°
 - 270** = 270°
- /** = Without angle-rotation regulation device, and without sensor support
 - R** = With angle-rotation regulation device
 - S** = With sensor supports
 - T** = With angle-rotation regulation device and sensor supports

Technical modifications keep in reserve !

(2021/03)



Rodless cylinders version



Ordering code

1605.Ø.stroke. _ _ _ _

- 01.M = Basic version
- 02.M = Single feed cylinder left head
- 03.M = Single feed cylinder right head
- 01.MG = Cylinder with linear control unit
(for Ø 25, Ø 32, Ø 40 and max stroke m. 3)
- 01.MH = Cylinder with sliding shoes guide
(for Ø 25, Ø 32, Ø 40)

Max strokes 6 meters
Bore: Ø25 - Ø32 - Ø40 - Ø50 - Ø63

Rodless cylinders Ø16



1605.16.stroke.01.MH

Possibility of a single feed cylinder head

- 1605.16.stroke.02.MH = left end cap-side connection
- 1605.16.stroke.03.MH = right end cap-side connection
- 1605.16.stroke.04.MH = left end cap-rear connection
- 1605.16.stroke.05.MH = right end cap-rear connection
- 1605.16.stroke.06.MH = left end cap-bottom connection
- 1605.16.stroke.07.MH = right end cap-bottom connection

Max strokes 2,5 meters

Accessories

Mounting foot brackets		Intermediate support	Oscillating hinge
1600.Ø.01F		1600.Ø.02F	1600.Ø.03F
from Ø 25 to Ø 32	from Ø 40 to Ø 63	from Ø 25 to Ø 63	from Ø 25 to Ø 63
Sensor brackets codes 1600._, SRS._, SHS._		Sensor brackets codes 1580._, MRS._, MHS._	
1600.A		1600.B	
			Sliding shoes guide
			1600.Ø.05F
			Ø 25, Ø 32 and Ø 40

Accessories rodless cylinders Ø16

Mounting foot brackets	Intermediate support	Oscillating hinge
1600.16.01F	1600.16.02F	1600.16.03F

Cable cylinders version



Ordering code

1601.Ø.stroke
1601.Ø.stroke.M (magnetic)

Bore: Ø 16 and Ø 25

Technical modifications keep in reserve !

(2021/03)

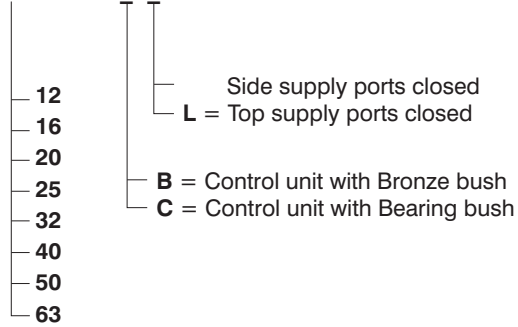


Ordering code

**Self lubricating bronze bushes
Bearing bushes**



6100.Ø.stroke.



Standard strokes

Bore Ø 12 and Ø 16: 10-20-30-40-50-75-100

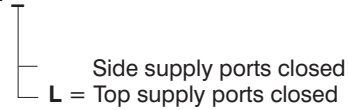
Bore Ø 20 and Ø 25: 20-30-40-50-75-100-125-150-175-200 mm

Bore Ø 32 and Ø 63: 25-50-75-100-125-150-175-200 mm

**Heavy duty Guided short
stroke cylinder**



6101.80.stroke. B .



Standard strokes

Bore Ø 80: 25-50-75-100-125-150-175-200

Technical modifications keep in reserve !

(2021/03)





Cylinders ECOFLAT

(series 1370 - 1373)

PNEUMAX

Basic version



Push/Pull version



Ordering code

13 . size . stroke.






- 1** = Basic version "1" female rod (Side connection)
- 1.P** = Basic version "1.P" female rod (Rear connection)
- 2** = Basic version "2" male rod (Side connection)
- 2.P** = Basic version "2.P" male rod (Rear connection)
- 3** = Female Push/Pull version "3"
- 4** = Male Push/Pull version "4"

- 70** = Magnetic chrome plated rod
- 71** = Magnetic stainless steel rod
- 72** = Non magnetic chrome plated rod
- 73** = Non magnetic stainless steel rod

Maximum standard strokes

Size 25	200mm
Size 32 - 63	300mm

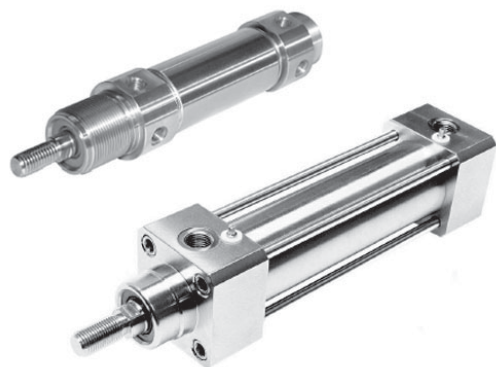
Accessories

Front and rear flange	Foot bracket	Rear male clevis	Rear clevis	Rod forks
1370.size.03	1370.size.05/1F	1370.size.09/1	1370.size.09F	1320.size.13F
from Ø 25 to Ø 63	from Ø 25 to Ø 63	from Ø 25 to Ø 63	from Ø 25 to Ø 63	from Ø 25 to Ø 63
				



Technical modifications keep in reserve !

(2021/03)



Stainless steel cylinders

AISI 304/316 for ISO 6431 (D32-200)
and micro ISO 6432 (D16-25)

Technical modifications keep in reserve !

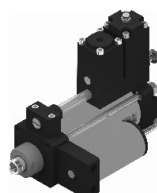
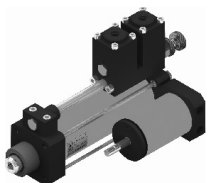
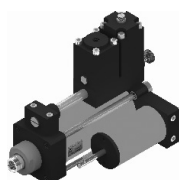
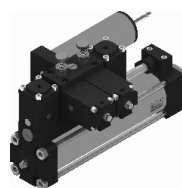
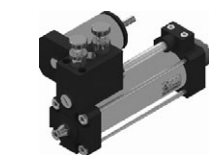
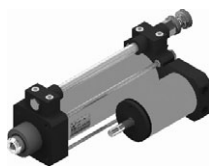
(2021/03)



Hydraulic speed control cylinders

(series 1400, section 4)

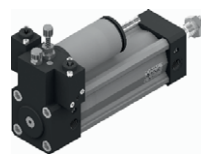
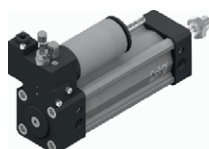
PNEUMAX



PNEUMAX

Hydro-Pneumatic cylinder

(series 1400, section 4)



Technical modifications keep in reserve !

(2021/03)